



Jonathan with Simon, his partner, at their place in Palm Beach.

ECCENTRICALLY ELEGANT

With A Mid-Century Modern Aesthetic, Jonathan Adler's Palm Beach Winter Retreat Offers A Dialogue Of His Design Philosophy

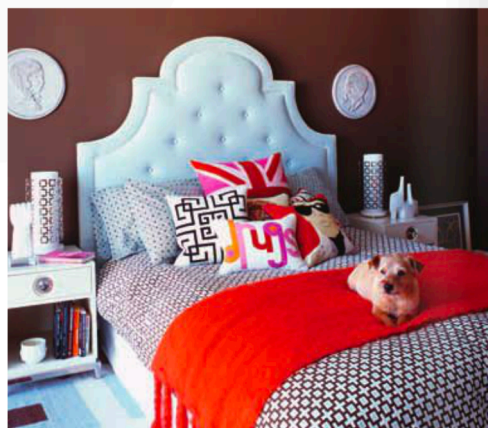
PHOTOGRAPHY BY NGOC MINH NGO

Jonathan Adler's childhood home was a sign of things to come. Sophisticated Knoll furnishings against a white palette suited his father's modernist taste, and Marimekko fabrics and "all sorts of groovy bits," as he remembers, satiated his mother's colorful, exuberant soul.

Today, the designer's 1,600-square-foot condominium in Palm Beach is a tribute to these kindred spirits. Designed in the 1970s by a disciple of architect Edward Durrell Stone, the oceanfront winter retreat Adler shares with partner Simon Doonan is surely a fusion of his youthful upbringings. "I wanted to create a dreamy and tranquil space with pops of smile-inducing color," Adler says. And so, a neutral shell of white walls, light stone flooring and white draperies receives layers of juicy hues throughout the apartment. "I am definitely rooted in modernism but in a Maximalist way," he says. "I embrace bold colors, groovy graphics and modern forms, and put them all together in my mental blender."



Pedro Friedberg "Hand" chairs from the owners' collection cradle a custom-designed sofa atop a Jonathan Adler Greek key circular area rug in the living room. **BELOW:** Chocolate-colored walls contrast a Woodhouse headboard that lends Palm Beach panache to the bedroom.



Vintage chairs covered in Alexander Girard's fabric for Maharam pull up to an Eero Saarinen dining table.

What came out of the blender this time is a cross between what Adler calls Palm Beach Chic and Happy Chic—a look and feel whose classical lines and lustrous surfaces reflect the designer's mid-century aesthetic, a cinematic glamour and an elegant playfulness. "There's a dreamy, fantastical quality to it all," Adler says.

Adler's penchant for eccentrically elegant design can be traced to decorating maven Elsie de Wolfe and the legendary Billy Baldwin. But it's his adoration for interior designer David Hicks that truly sets the tone for his distinctive approach. "What I particularly love about Hicks' work is the way he mixed styles, pairing traditionalism with modernism with classicism with whatever he felt like, and he always did it with a sense of boldness and confidence," he says.

The condominium brims with examples of Adler's keen eye and deft hand. Textiles and furnishings that he carries through his namesake company abound in every room. But it's the porcelain pottery that is most telling: Adler has been creating the art since he was a child and turns to the work of mid-century Scandinavian designers and artists Bjorn Wiinblad and Stig Lindberg for inspiration. "I try to make pots that are unimpeachably chic and infectiously joyous, and Wiinblad and Lindberg both pulled off that combination magnificently," he says.

Now not only a potter, but a furniture designer, residential and commercial interior designer, and former judge on Bravo's *Top Design*, he's come a long way since his boyhood dreams. "When I first started my career as a potter, my dream was to never have a proper job again and to find an audience for my work," says Adler, who boasts nine retail stores nationwide, including one on Miami's Lincoln Road, and whose home decor is carried in more than 1,000 locations worldwide. "At the time, my idea of success would have been a life of hawking my wares at rain-soaked craft fairs if it meant I could earn a living making pots."

Instead, he feverishly trolls the shoppes of Palm Beach's Antique Row in search of the next over-the-top and extraordinary ingredient to fuel his imagination.

Editor's Note: For more information about Jonathan Adler, call 800-963-0891 or visit jonathanadler.com.



Jonathan Adler's "Large Man/Woman Vase" has a special place in the master bedroom.